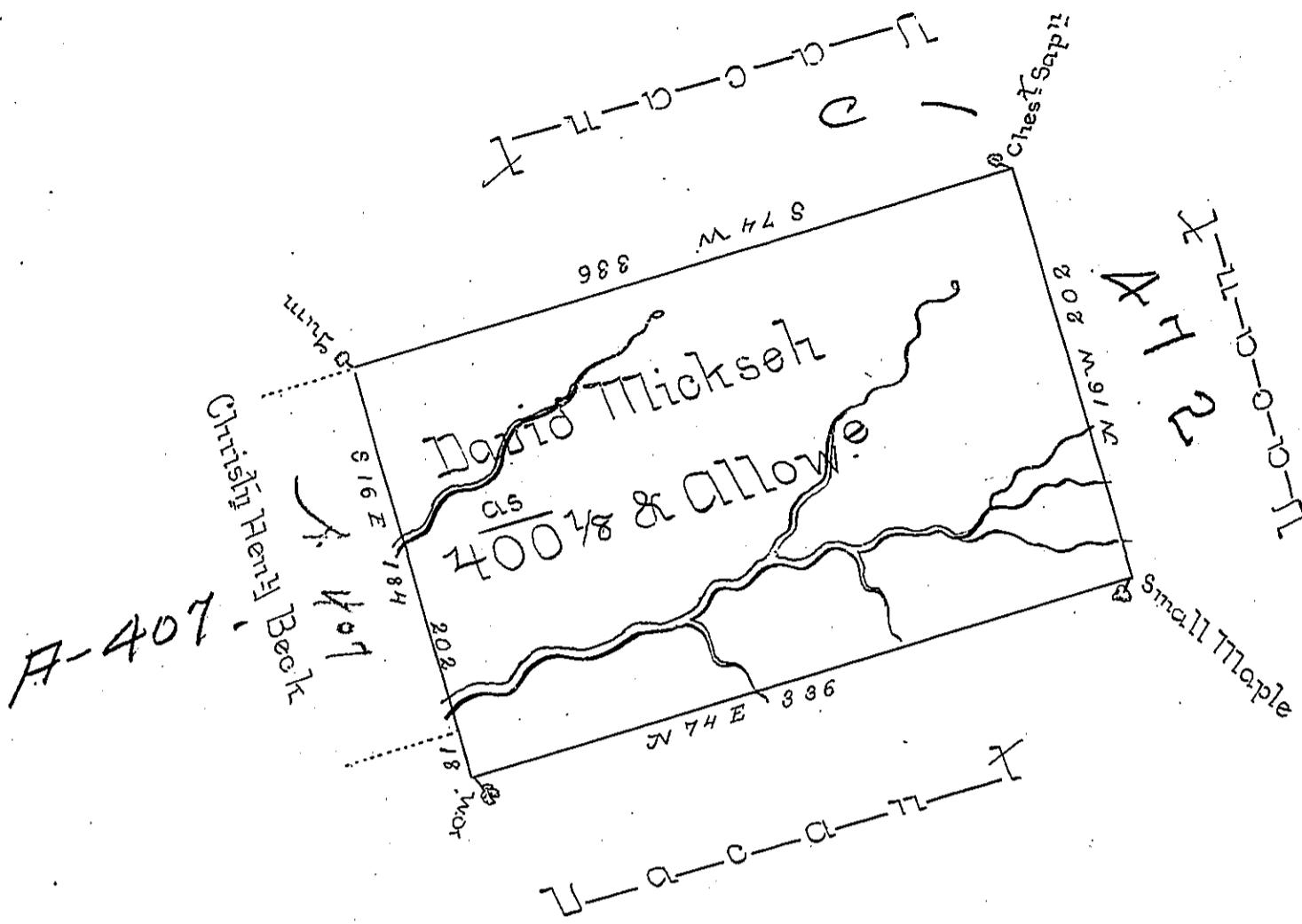


Foster -  
Luzerne



Draft of a tract of land called \_\_\_\_\_ Situate on a Branch  
 of Niscopeak called Black Creek joining Land Surveyed for  
 Christ: Hen: Beck in Catawissey Township Northum:  
 County containing four Hundred acres  $\frac{1}{8}$  & Allowance  
 of Six P Cent for roads &c. Surveyed for David Mickseh  
 the 23 Day of ~~April~~<sup>May</sup> 1792 in pursuance of a Warrant  
 dated the 3<sup>d</sup> Day of April 1792.

by W<sup>m</sup> Gray D.S.

To Daniel Brodhead Esq:  
 Survey Genl:

N.B. The Warr<sup>t</sup> Says supposed to be in Northampton  
 County

*IN TESTIMONY* that the above is a copy of the original remaining on file in the  
 Department of Internal Affairs of Pennsylvania, made con-  
 formably to an Act of Assembly approved the 16th day of  
 February, 1833, I have hereunto set my Hand and caused  
 the Seal of said Department to be affixed at Harrisburg, this  
 second day of March 1897.

*James M. Watta*  
 Secretary of Internal Affairs.